

LEDskin®

the technology of tomorrow
for the exhibition stand of today



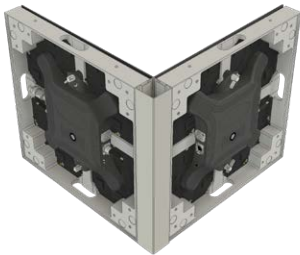
beMatrix®
re!nventing stand building systems

LED innovations: freedom of form



In 2017 beMatrix developed the product LEDskin®, a video tile that can be seamlessly integrated into an exhibition stand. But we keep on innovating. So one year later we introduce to you the **LED novelties** that offer you endless possibilities!

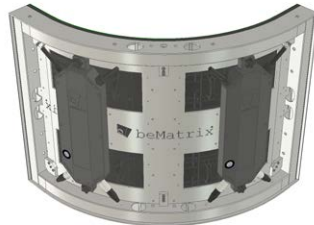
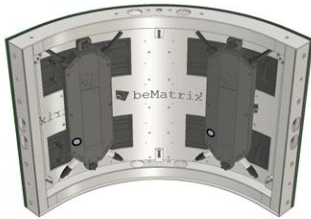
We have expanded our LEDskin® range. It is now available in **3 pixel pitches: 2.5, 3.1 and 3.8**. We have also increased the creative possibilities with the LED tiles: perfectly finished **inner and outer corners** and even **curves** can now be created with LEDskin®.



INNER & OUTER CORNERS

By combining LEDskin® frames with the existing beMatrix corner profile, an inner corner is easily created.

beMatrix has created a new welded frame, in which LED modules can be attached to create an outer corner.



CURVES

With the new curved LED modules and convex & concave LED frames, even curves can be integrated in your design, as it fits seamlessly into the beMatrix aluminium frame system.

LEDskin® full of animation, movement and great feeling

LEDskin® transforms your beMatrix stand into a real hotspot, full of animation, movement and great feeling. Through **LEDskin®**, beMatrix has once again created **a revolution in the world of stand building**. From now on – and in the blink of an eye – you can combine LED cabinets and frames to create an impressive video wall. And they can be **integrated seamlessly into a new or existing beMatrix stand**. This means you can avoid separate display screens, which so often are a disruptive element in a sleek stand design. You are also not limited to the maximum (standard) dimensions of individual display screens. Instead, you can turn the whole thing into a totally seamless video wall.

With LEDskin®, your stand really comes to life, attracting visitors from far and wide. You can't beat catchy video images, all sorts of animations or moving graphic elements.



▲ LEDskin® frames are so easy to finish on the reverse side with **textile or panel**.



reddot design award
winner 2017



▲ LEDskin® was awarded the **Red Dot Award: Product Design 2017** & **iF Design Award 2018**.



The LED wall that fits seamlessly to the beMatrix concept and its frames

An individual LEDskin® cabinet measures 496 x 496 mm and is 62 mm thick. This means that cabinets with 4 modules fit into the familiar b62 frame system in terms of height, width and thickness. It's so easy to connect various cabinets in any direction with the same tools that you use to build your beMatrix stand. So LEDskin® fits perfectly into the frames with big holes.

You don't need to be a wizard to use LEDskin®.

Our LED wall is plug & play: you only need to build in the cabinets, plug in the sockets and connect your video device/computer. The dedicated LEDskin® Novastar platform works with both Mac and PC Operating Systems, as well as all popular video standards. You simply connect your familiar device in the usual way, start the video or application you want and the walls of your beMatrix stand instantly come to life!



▲ Fixing the LEDskin® frames to the beMatrix aluminium frames is easy with the handy standard M8 connectors. Ready in a jiffy and always firmly and securely anchored.



▲ The holes in the beMatrix frames also act as cable conduits and they connect together, meaning no more ugly cable spaghetti is visible at the rear of the stand.



▲ The GEKKO is a specially designed tool enabling you to replace the LED modules at the front with ease. The control unit at the back also dismantles quickly thanks to two manual locks.

Pixel pitches	2.5 mm	3.1 mm	3.8 mm
---------------	--------	--------	--------

LEDskin® INFORMATION

Straight LED frames

Module quantity	4 pcs	4 pcs	4 pcs
LEDskin® module resolution	96 x 96 pixels	80 x 80 pixels	64 x 64 pixels
LEDskin® module dimension	248 x 248 mm	248 x 248 mm	248 x 248 mm
LEDskin® cabinet resolution	192 x 192 pixels	160 x 160 pixels	128 x 128 pixels
LEDskin® cabinet dimension	496 x 496 x 62 mm	496 x 496 x 62 mm	496 x 496 x 62 mm
Pixel density	149,844 pixels/m ²	104,058 pixels/m ²	66,598 pixels/m ²
Cabinet weight	7,3kg	7,3kg	7,3kg

Curved LED frames - concave - R430

Module quantity	4 pcs (2 left - 2 right)	4 pcs (2 left - 2 right)	-
LEDskin® module resolution	138 x 96 pixels	112 x 80 pixels	-
LEDskin® module dimension	356 x 248 mm	356 x 248 mm	-
LEDskin® cabinet resolution	276 x 192 pixels	224 x 160 pixels	-
LEDskin® cabinet dimension	496 x 496 x 496 mm	496 x 496 x 496 mm	-
Pixel density	149,844 pixels/m ²	104,058 pixels/m ²	-

Curved LED frames - convex - R430

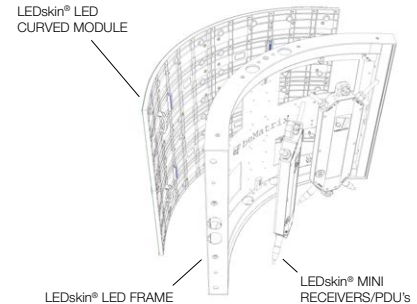
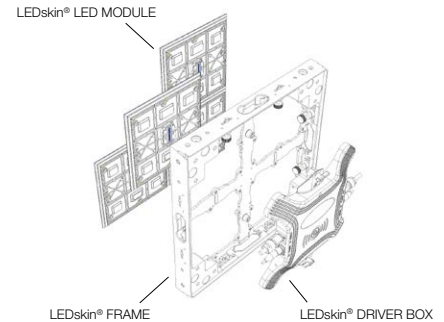
Module quantity	4 pcs (2 left - 2 right)	4 pcs (2 left - 2 right)	-
LEDskin® module resolution	156 x 96 pixels	128 x 80 pixels	-
LEDskin® module dimension	402.6 x 248 mm	402.6 x 248 mm	-
LEDskin® cabinet resolution	312 x 192 pixels	256 x 160 pixels	-
LEDskin® cabinet dimension	496 x 496 x 496 mm	496 x 496 x 496 mm	-
Pixel density	149,844 pixels/m ²	104,058 pixels/m ²	-

MECHANICAL AND OPTICAL RATINGS

Surface flatness	Gap ≤ 0,5 mm	Gap ≤ 0,5 mm	Gap ≤ 0,5 mm
Brightness	1,200 nits	1,200 nits	1,500 nits
View angle	110°/110°	110°/110°	110°/110°
View distance	≥ 2,5 m	≥ 3,1 m	≥ 3,9 m
Brightness adjustment	0-100% 256 levels	0-100% 256 levels	0-100% 256 levels
Contrast ratio	1:2000	1:2000	1:2000
LED	SMD 1515 matt LED	SMD 2121 matt LED	SMD 2020 matt LED

POWER SUPPLY

Operation power	100-240V AC / 50-60Hz	100-240V AC / 50-60Hz	100-240V AC / 50-60Hz
Max. power consumption	400w/m ²	600w/m ²	720w/m ²
Average power consumption	133w/m ²	200w/m ²	240w/m ²
Platform	Novastar	Novastar	Novastar
Operating life	100,000 hours	100,000 hours	100,000 hours



beMatrix[®]
reInventing stand building systems

beMatrix head-office Belgium

Wijnendalestraat 174

B - 8800 Roeselare

T. +32 51 20 07 50

info@beMatrix.com

www.beMatrix.com

Follow us:      